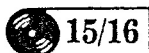


Lily Was Here

Candy Dulfer & Dave Stewart

Words and Music:
David Stewart

Saxophone B \flat



15/16

$\text{♩} = 102$

Am Dm/A Em/A

19 Am Dm/A

25 Em/A Am Dm/A

32 Em/A Am

37 Dm/A Em/A

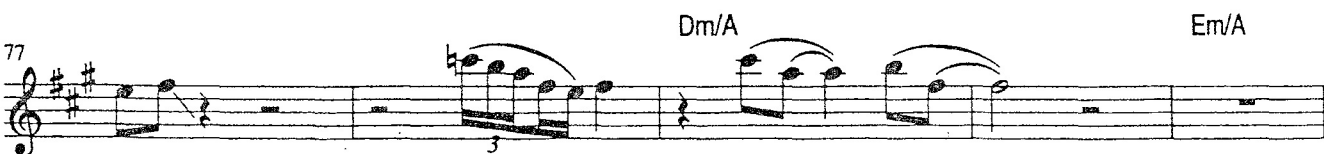
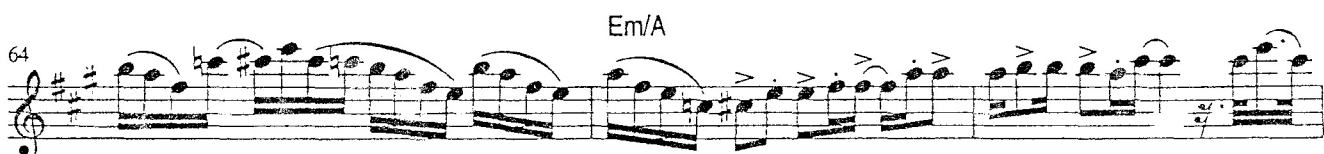
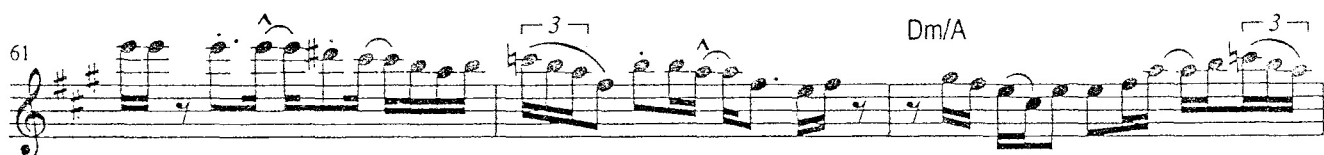
43 Am

46 Dm/A

© by D 'N' A Music Ltd.

Musik-Edition Discoton GmbH (BMG UFA Musikverlage) München.

Alle Rechte für Deutschland, Österreich, Schweiz, GUS, Rumänien, Bulgarien, Albanien, ehem. Jugoslawien.



82 *Am*

85 *Dm/A* *Em/A* *Am*

92 *Dm/A*

96 *Em/A* *Am*

101 *Dm/A*

104 *Em/A* *Am*

108

111 *Dm/A* *fade out* *Em/A*

114 *Am*

Lily Was Here

Candy Dulfer & Dave Stewart



Words and Music:
David Stewart

Saxophone $\text{E}\flat$

$\text{♩} = 102$

2 10 Em 2 Am/E Bm/E 2

19 Em Am/E 2

25 Bm/E Em Am/E 2

32 Bm/E Em 3

37 Am/E Bm/E 2

43 Em

46 Am/E

© by D 'N' A Music Ltd.

Musik-Edition Discoton GmbH (BMG UFA Musikverlage) München.

Alle Rechte für Deutschland, Österreich, Schweiz, GUS, Rumänien, Bulgarien, Albanien, ehem. Jugoslawien.

49 Bm/E Em

53 Am/E

56 Bm/E

58 Em

61 Am/E

64 Bm/E

67 Em Am/E

72 Bm/E Em

77 Am/E Bm/E

Detailed description: This musical score is for guitar, spanning measures 49 to 77. The key signature has three sharps (F#, C#, G#). The notation is in treble clef. Chords are indicated by letters above the staff: Bm/E, Em, and Am/E. Measure 49 starts with a Bm/E chord and a melodic line with a wavy line above it. Measure 50 has an Em chord and a triplet of eighth notes. Measure 51 continues the melodic line. Measure 52 has an Am/E chord. Measure 53 continues the melodic line. Measure 54 has an Am/E chord. Measure 55 continues the melodic line. Measure 56 has a Bm/E chord and a triplet of eighth notes. Measure 57 continues the melodic line. Measure 58 has an Em chord. Measure 59 continues the melodic line. Measure 60 has an Am/E chord. Measure 61 continues the melodic line. Measure 62 has an Am/E chord. Measure 63 continues the melodic line. Measure 64 has a Bm/E chord. Measure 65 continues the melodic line. Measure 66 continues the melodic line. Measure 67 has an Em chord. Measure 68 continues the melodic line. Measure 69 has an Am/E chord. Measure 70 continues the melodic line. Measure 71 continues the melodic line. Measure 72 has a Bm/E chord. Measure 73 has an Em chord. Measure 74 continues the melodic line. Measure 75 continues the melodic line. Measure 76 continues the melodic line. Measure 77 has an Am/E chord. Measure 78 continues the melodic line. Measure 79 continues the melodic line. Measure 80 continues the melodic line. Measure 81 continues the melodic line. Measure 82 continues the melodic line. Measure 83 continues the melodic line. Measure 84 continues the melodic line. Measure 85 continues the melodic line. Measure 86 continues the melodic line. Measure 87 continues the melodic line. Measure 88 continues the melodic line. Measure 89 continues the melodic line. Measure 90 continues the melodic line. Measure 91 continues the melodic line. Measure 92 continues the melodic line. Measure 93 continues the melodic line. Measure 94 continues the melodic line. Measure 95 continues the melodic line. Measure 96 continues the melodic line. Measure 97 continues the melodic line. Measure 98 continues the melodic line. Measure 99 continues the melodic line. Measure 100 continues the melodic line.

82 *Em*

85 *Am/E* *Bm/E* *Em*

92 *Am/E*

96 *Bm/E* *Em*

101 *Am/E*

104 *Bm/E* *Em*

108 *fade out*

111 *Am/E* *Bm/E*

114 *Em*